

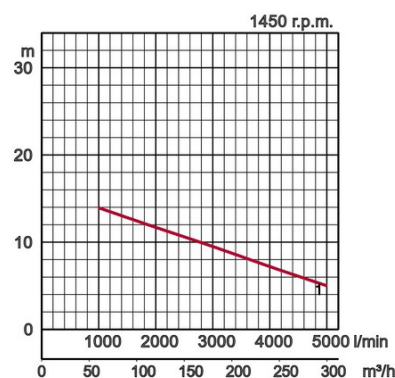
Specifications:

Model	Colour code curve	Bore mm	Motor output kW	Rated current A	Head max. m	Capacity max. l/min	Dry weight kg w/o cable	Max. solid handling ø mm	Pressure resistance max. m	Cable length m
150B47.5L	● 1			15,9	13,95	5000	200,0		15	

Sewage pump with non-clogging impeller

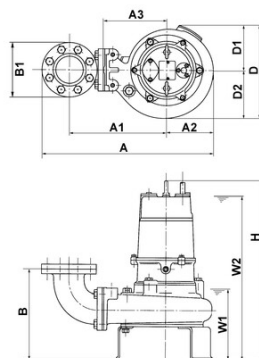
ø Discharge bore mm		150mm		
Pumping Fluid	Type of Fluid	Municipal sewage		
	Temperature	0-40°C		
Pump	Components	Impeller	Non-clog impeller	
		Shaft Seal	Double mechanical seal	
		Bearings	Shielded ball bearings	
	Material	Impeller	Grey iron casting EN-GJL-200	
		Casing	Grey iron casting EN-GJL-200	
		Suction Plate	Grey iron casting EN-GJL-200	
		Shaft Seal	Silicon carbide in oil bath	
Motor	Phase / Voltage		3-phase / 400V / 50Hz / d.o.l.	
	Lubrication		Turbine oil (ISO VG32)	
	Motor Protector (built-in)		Circle thermal cut-out	
	Insulation		Insulation class F	
	Type, Poles		Induction motor, 4 poles, IP68	
	Material	Casing	Grey iron casting EN-GJL-200	
		Shaft	Stainless steel EN-X30Cr13	
Cable		Rubber, NSSHÖU		
Discharge Connection		Inside thread, JIS10K flange		

Optional Accessories



Dimensions in mm:

Model	A	A1	B	B1	D	D1	H	W1
150B47.5L	871	503	515	280	486	232	1085	450



W1: lowest running water level

Please mind: discharge bend, duck foot bend and stand set are accessories and must be ordered separately