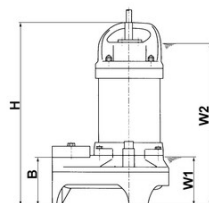
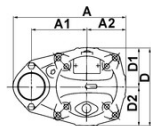
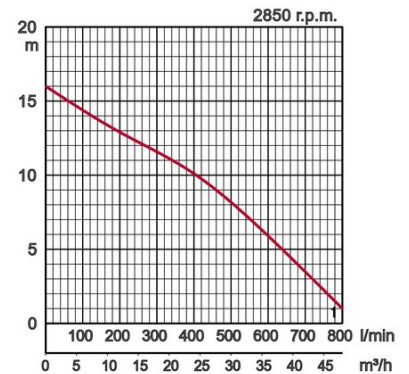


Specifications:

Model	Colour code curve	Bore mm	Motor output kW	Rated current A	Head max. m	Capacity max. l/min	Dry weight kg w/o cable	Max. solid handling ø mm	Pressure resistance max. m	Cable length m
80PU21.5	1			4,0	16,0	800	15,8		15	

Light and solid - Guide rail fitting available for all models.

ø Discharge bore mm		80mm		
Pumping Fluid	Type of Fluid	Municipal sewage, water with solids		
	Temperature	0-40°C		
Pump	Components	Impeller	Vortex impeller	
		Shaft Seal	Double mechanical seal	
		Bearings	Shielded ball bearings	
	Material	Impeller	Glass fibre reinforced plastic	
		Upper casing	Glass fibre reinforced plastic	
		Lower casing	Plastic	
		Shaft Seal	Silicon carbide in oil bath	
Motor	Lubrication		Turbine oil (ISO VG32)	
	Motor Protector (built-in)		Circle thermal cut-out	
	Phase / Voltage		3-phase / 400V / 50Hz / d.o.l.	
	Type, Poles		Induction motor, 2 poles, IP68	
	Insulation		Insulation class E	
	Material	Casing	Stainless steel EN-X5CrNi18-10	
		Shaft	Stainless steel EN-X5CrNi18-10	
Cable		Rubber, 10m H07RN8-F		
Discharge Connection		Inside thread, flange		
Optional Accessories		Guide rail fitting "TOK" for small pumps		



Dimensions in mm:

Model	A	A1	B	D	D1	H	W1
80PU21.5	295	145	130	196	92	475	150

W1: lowest running water level

Please mind: discharge bend, duck foot bend and stand set are accessories and must be ordered separately