



LB 1-phase
50Hz

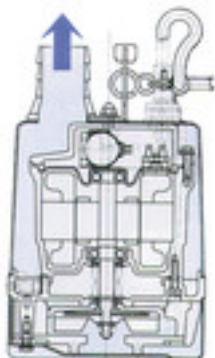
Compact, light and powerful
- for professional use

The TSURUMI LB-pumps are small and robust submersible contractor's pumps with a wide range of applications wherever water has to be moved.



Top Discharge

Pumped water flows between the outer cover and the motor, cooling the motor and discharging as illustrated (forced motor cooling). The pump can be run continuously in air.



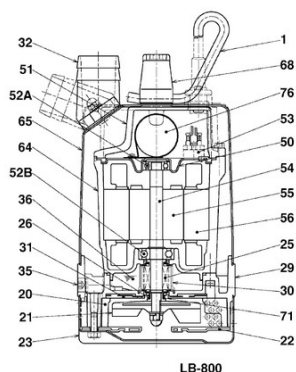
Electrode auto control system available

Handles like a non-automatic pump - no special installation procedures. Sensitive electrodes detect water to start up pump operation even when foreign matters are present. Relay sensor completely molded in resin and covered by rubber case for protection against rough handling.



Components:

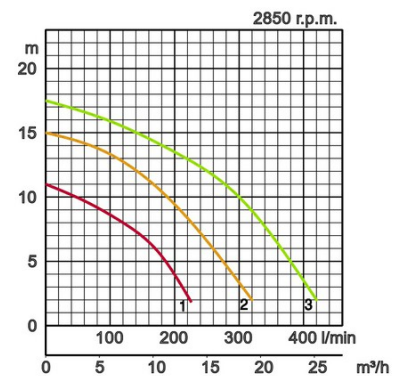
001 Cable	050 Motor cover
020 Pump casing	051 Head cover
021 Impeller	052A Upper bearing
022 Suction plate	052B Lower bearing
023 Strainer	053. Miniature protector
025 Mechanical seal	054 Shaft
026 Oil sealing	055 Rotor
029 Oil casing	056 Stator
030 Oil lifter	064 Motor casing
031 Wear plate	065 Jacket
032. Outlet	068 Handle
035 Oil plug	071 Shaft sleeve
036 Lubricant	076 Condensor



Specifications:

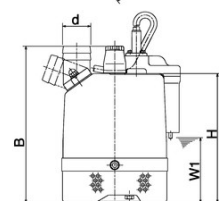
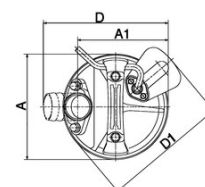
Model	Colour code curve	Bore mm	Motor output kW	Rated current A	Head max. m	Capacity max. l/min	Dry weight kg w/o cable	Max. solid handling ø mm	Pressure resistance max. m	Cable length m
LB-480	1	50	0,48	2,9	11,0	225	10,4	6	10	10
LB-480A		50	0,48	2,9	11,0	225	11,0	6	10	10
LB-800	2	50	0,75	4,5	15,0	320	13,1	6	10	10
LB-800A		50	0,75	5,0	15,0	320	13,7	6	10	10
LB-1500	3	50	1,5	15,4	17,5	440	33,0	6	25	20

ø Discharge bore mm		50		
Pumping Fluid	Temperature	0-40°C		
	Type of Fluid	Spring water, Rain water, Ground water, Sand carrying water		
Pump	Components	Impeller	Semi-Vortex impeller	
		Shaft Seal	Double mechanical seal	
		Bearings	Shielded ball bearings	
	Material	Impeller	Urethane rubber, Chromium iron casting	
		Casing	Ethylene propylene rubber	
		Suction Plate	Steelplate+Urethane rubber	
Shaft Seal	Silicon carbide in oil bath			
Motor	Lubrication		Turbine oil (ISO VG32)	
	Motor Protector (built-in)		Miniature protector, Circle thermal cut-out	
	Type, Poles		Induction motor, 2 poles, IP68	
	Phase / Voltage		Single phase 230V / 110V / 50Hz	
	Insulation		Insulation class E, Insulation class B	
	Material	Casing	Aluminium die casting	
Shaft		Stainless steel EN-X6Cr13		
Cable		Rubber, 10m H07RN8-F		
Discharge Connection		Threaded flange/Hose coupling		



Dimensions in mm:

Model	d	A	A1	B	D	D1	H	W1
LB-480	50	187	161	353	231	-	228	50
LB-480A	50	187	161	353	231	223	228	115
LB-800	50	187	160	408	230	-	283	50
LB-800A	50	187	160	408	230	223	283	170
LB-1500	50	187	122	600	-	-	518	80



W1: lowest running water level

In the event of abrasive and corrosive utilization, stronger wear and tear will take place naturally in certain components. In this regard, please pay attention to our website www.tsurumi.eu/english/applications.htm.



Contributing to World-wide Prosperity and Understanding through Worker- and Environment-friendly Production.

Designed for increased productivity through fully integrated streamlined production systems, Tsurumi's factory in Kyoto (Japan) features a production capacity of a full 1 million pumps per year. Large-scale modern R&D facilities offer optimum conditions for experimenting and testing of even super-large pumps and for developing new products to expand the possibilities and applications of pumps. To provide optimum conditions for our main asset, our workers, as well as for the environment, special emphasis is placed on optimized working conditions with airconditioning, minimized dust and exhaust gas emission, comprehensive recycling and waste recovery.

Tsurumi (Europe) GmbH

Wahlerstr. 10
D-40472 Düsseldorf
Tel.: +49 (0)211-4179373
Fax: +49 (0)211-417937-480
Email: sales@tsurumi.eu
www.tsurumi.eu

We reserve the right to change specifications and designs herein for improvement without prior notice. Our pumps are for professional use only. In the event that Tsurumi (Europe) GmbH have, in exceptional cases taken over, a manufacturer's warranty, this entitles the enduser to assert remedy free of charge against Tsurumi (Europe) GmbH due to any defect to the product occurring during the guarantee period (see below), also then when the warranty claims against the seller do not or no longer exist. In the event of malfunction, which is attributable to the improper handling by the enduser, no guarantee claim shall arise. Further claims shall not result from the warranty, unless if something to the contrary has explicitly been determined. The decision as to whether remedy is effected by way of replacement or repair shall be at the choice of Tsurumi (Europe) GmbH. The claims shall be time barred after a period of three months after expiry of the guarantee period, however, not before expiry of the warranty period which is valid towards the seller. In the event of doubt, the warranty period shall correspond with the warranty period which is valid between the end-user and his seller.



com-LB-EN

