



Portable Contractors' Pumps

- for professional use

Portable submersible pumps made for heavy use
- 0,4kW to 2,2kW





LB

Compact, light, powerful

The TSURUMI LB-pumps are small and robust submersible contractor's pumps with a wide range of applications where ever water has to be moved.



LSC

Residue water pump

Original residue dewatering pump capable of pumping down to floor level. Even the smallest puddle can be pumped dry. Ideal for complete drainage of flat surfaces where a sump is not available: rooftops, parking lots, garages, roadways, pools,...



HS

Light duty drainage pump with spiral casing

The TSURUMI HS-pump is a small and robust submersible contractor's pump with a wide range of applications where ever water has to be moved.



HSD

Portable sand and slurry pump with agitator

The Tsurumi HSD-pump is a small and robust submersible contractor's pump.

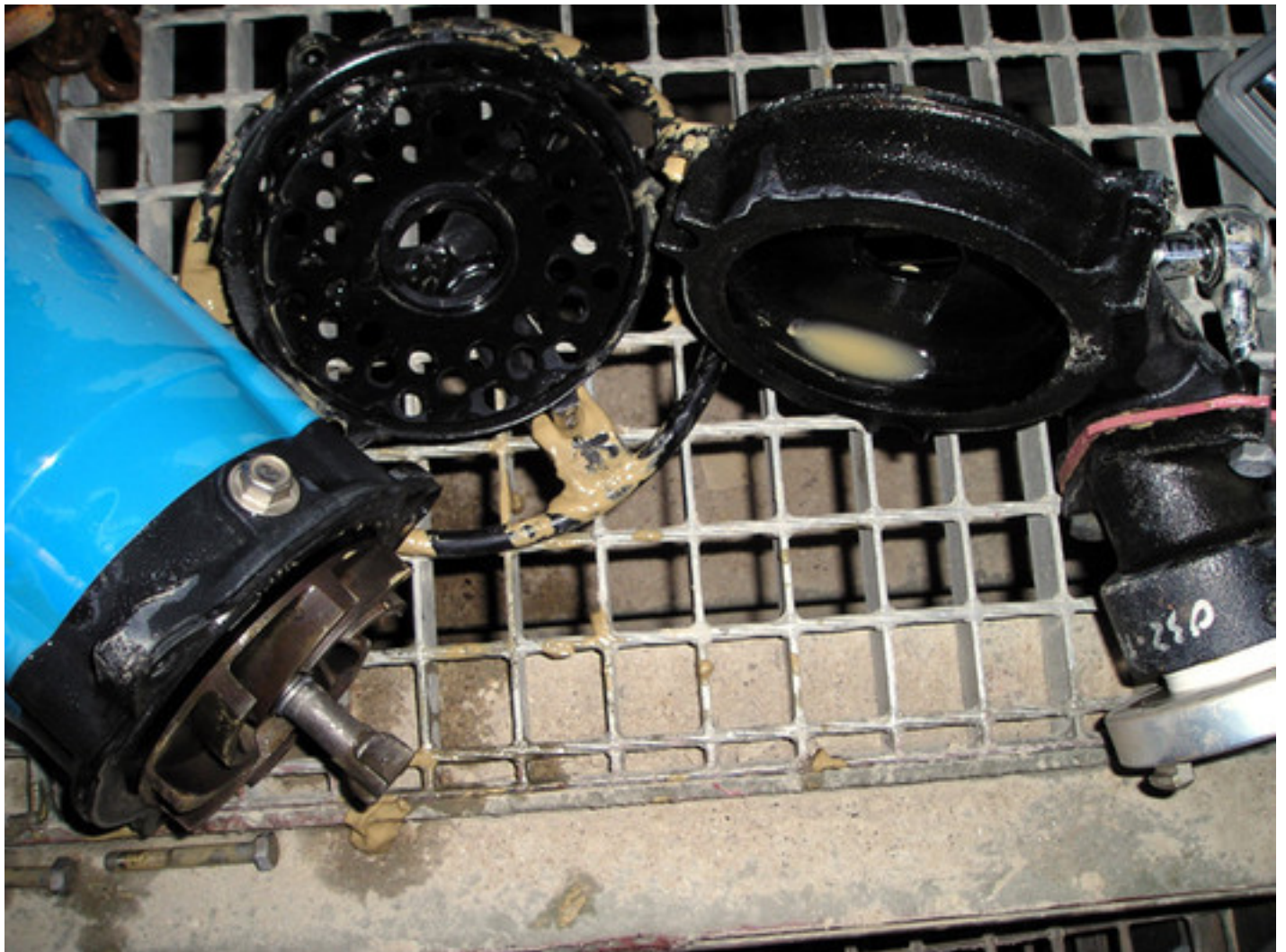
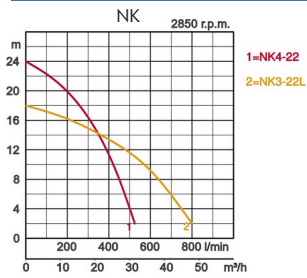
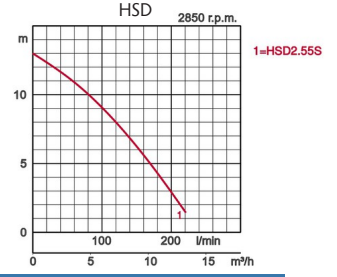
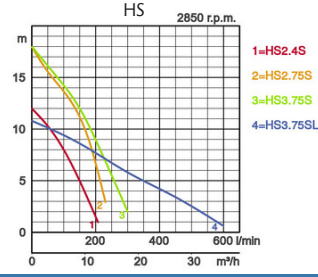
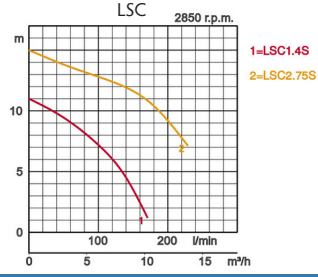
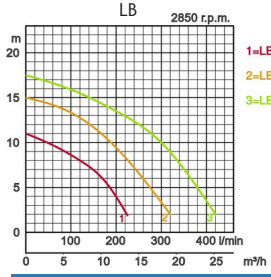


NK

Compact - light - 2,2kW

Generally applicable highgrade pump that can be used efficiently in draining in civil engineering through to deepwell applications. Maximum depth of submersion 25m.

Type	Model	øDischarge bore	Motor output kW	Poles	Impeller	Level sensor	Motor protector (built-in)	Flow arrangement			
								Top discharge	Top discharge (side flow)	Side discharge (spiral type)	
Portable 1ph/230V1ph/110V	LB	50	0,48 - 1,5	2	Vortex	○	○	○			Page 4
	LSC	25 · 50	0,75 · 0,48	2	Vortex	○	○	○			Page 5
	HS	50 · 80	0,75 · 0,4	2	Vortex		○			○	Page 6
	HSD	50	0,55	2	Vortex		○			○	Page 7
	NK	50 · 80	2,2	2	Vortex		○		○		Page 7



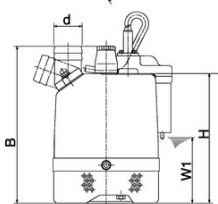
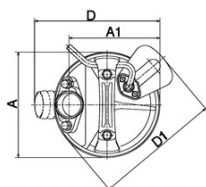
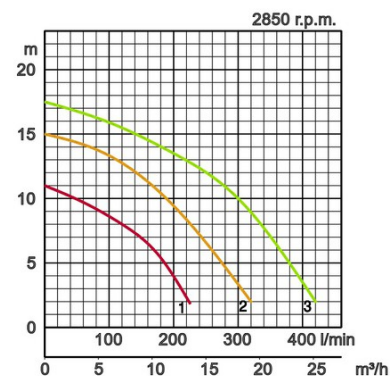
Specifications:

Model	Colour code curve	Bore mm	Motor output kW	Rated current A	Head max. m	Capacity max. l/min	Dry weight kg w/o cable	Max. solid handling ø mm	Pressure resistance max. m	Cable length m
LB-480	1	50	0,48	2,9	11,0	225	10,4	6	10	10
LB-480A		50	0,48	2,9	11,0	225	11,0	6	10	10
LB-800	2	50	0,75	4,5	15,0	320	13,1	6	10	10
LB-800A		50	0,75	5,0	15,0	320	13,7	6	10	10
LB-1500	3	50	1,5	15,4	17,5	440	33,0	6	25	20

Light Duty Drainage Pump - LB-480A and LB-800A with level control



ø Discharge bore mm		50	
Pumping Fluid	Temperature	0-40°C	
	Type of Fluid	Spring water, Rain water, Ground water, Sand carrying water	
Pump	Components	Impeller	Semi-Vortex impeller
		Shaft Seal	Double mechanical seal
		Bearings	Shielded ball bearings
	Material	Impeller	Urethane rubber, Chromium iron casting
		Casing	Ethylene propylene rubber
		Suction Plate	Steelplate+Urethane rubber
Shaft Seal	Silicon carbide in oil bath		
Motor	Insulation		Insulation class E, Insulation class B
	Motor Protector (built-in)		Miniature protector, Circle thermal cut-out
	Lubrication		Turbine oil (ISO VG32)
	Type, Poles		Induction motor, 2 poles, IP68
	Phase / Voltage		Single phase 230V / 110V / 50Hz
	Material	Casing	Aluminium die casting
		Shaft	Stainless steel EN-X6Cr13
Cable		Rubber, 10m H07RN8-F	
Discharge Connection		Threaded flange/Hose coupling	



W1: lowest running water level

Dimensions in mm:

Model	d	A	A1	B	D	D1	H	W1
LB-480	50	187	161	353	231	-	228	50
LB-480A	50	187	161	353	231	223	228	115
LB-800	50	187	160	408	230	-	283	50
LB-800A	50	187	160	408	230	223	283	170
LB-1500	50	187	122	600	-	-	518	80

In the event of abrasive and corrosive utilization, stronger wear and tear will take place naturally in certain components. In this regard, please pay attention to our website www.tsurumi.eu/english/applications.htm.

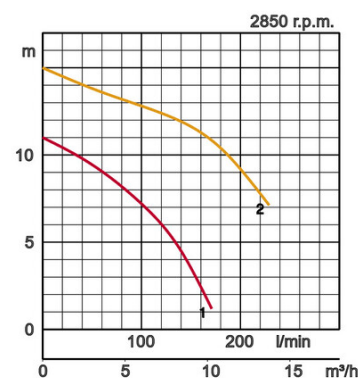
Specifications:

Model	Colour code curve	Bore mm	Motor output kW	Rated current A	Head max. m	Capacity max. l/min	Dry weight kg w/o cable	Max. solid handling ø mm	Pressure resistance max. m	Cable length m
LSC1.4S	1	25	0,48	2,9	11,0	170	12,0	6	10	10
LSCE1.4S		50	0,48	2,9	11,0	170	12,6	6	10	10
LSC2.75S	2	50	0,75	4,5	15,0	228	15,2	6	10	10
LSCE2.75S		50	0,75	4,5	15,0	228	15,8	6	10	10

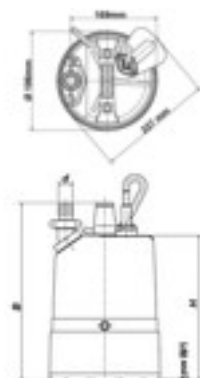
Original residue dewatering pump capable of pumping down to floor level. Even the smallest puddle can be pumped dry. Ideal for complete drainage of flat surfaces where a sump is not available: rooftops, parking lots, garages, roadways, pools,...



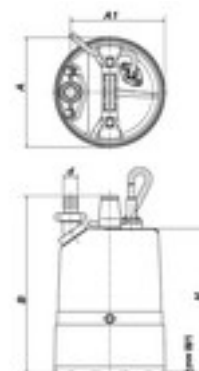
ø Discharge bore mm		25, 50		
Pumping Fluid	Type of Fluid	Cleaning water, Water on floor, Puddles		
	Temperature	0-40°C		
Pump	Components	Impeller	Semi-Vortex impeller	
		Shaft Seal	Double mechanical seal	
		Bearings	Shielded ball bearings	
	Material	Impeller	Urethane rubber	
		Casing	Ethylene propylene rubber	
		Suction Plate	Steelplate+Urethane rubber	
		Shaft Seal	Silicon carbide in oil bath	
Motor	Insulation		Insulation class E	
	Phase / Voltage		Single phase 230V / 110V / 50Hz	
	Type, Poles		Induction motor, 2 poles, IP68	
	Lubrication		Turbine oil (ISO VG32)	
	Motor Protector (built-in)		Miniature protector	
	Material	Casing	Aluminium die casting	
		Shaft	Stainless steel EN-X6Cr13	
Cable		Rubber, 10m H07RN8-F		
Discharge Connection		Hose coupling		



LSC1.4S
LSCE2.75S



LSC1.4S
LSC2.75S



Dimensions in mm:

Model	d	A	A1	B	H
LSC1.4S	25	196	168	316	258
LSCE1.4S	25	-	-	316	258
LSC2.75S	50	197	167	357	313
LSCE2.75S	50	-	-	357	313

W1: lowest running water level

In the event of abrasive and corrosive utilization, stronger wear and tear will take place naturally in certain components. In this regard, please pay attention to our website www.tsurumi.eu/english/applications.htm.

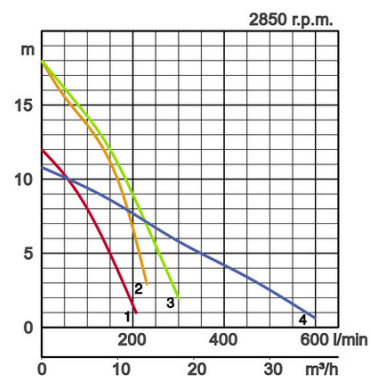
Specifications:

Model	Colour code curve	Bore mm	Motor output kW	Rated current A	Head max. m	Capacity max. l/min	Dry weight kg w/o cable	Max. solid handling ø mm	Pressure resistance max. m	Cable length m
HS2.4S	1	50	0,4	2,6	12,2	207	11,3	7	10	10
HS2.75S	2	50	0,75	4,8	18,0	230	19,0	7	10	10
HS3.75S	3	80	0,75	4,8	18,0	300	19,6	7	10	10
HS3.75SL	4	80	0,75	4,8	10,8	580	19,6	7	10	10

The TSURUMI HS-pump is a small and robust submersible contractor's pump with a wide range of applications wherever water has to be moved.

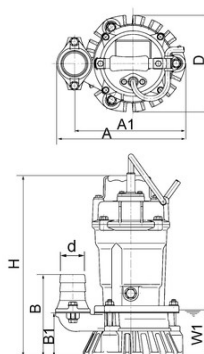


ø Discharge bore mm		50, 80	
Pumping Fluid	Temperature	0-40°C	
	Type of Fluid	Spring water, Rain water, Ground water, Sand carrying water	
Pump	Components	Impeller	Semi-Vortex impeller
		Shaft Seal	Double mechanical seal
		Bearings	Shielded ball bearings
	Material	Impeller	Urethane rubber
		Casing	Ductile iron casting EN-GJS-700-2
Shaft Seal	Silicon carbide in oil bath		
Motor	Phase / Voltage		Single phase 230V / 110V / 50Hz
	Lubrication		Turbine oil (ISO VG32)
	Motor Protector (built-in)		Miniature protector
	Type, Poles		Induction motor, 2 poles, IP68
	Insulation		Insulation class E
	Material	Casing	Aluminium die casting
Shaft		Stainless steel EN-X6Cr13	
Cable		Rubber, 10m H07RN8-F	
Discharge Connection		Threaded flange/Hose coupling	



Dimensions in mm:

Model	d	A	A1	B	B1	D	H	W1
HS2.4S	50	240	207	158	84	185	358	90
HS2.75S	50	285	233	217	109	184	424	90
HS3.75S	80	285	233	217	109	184	424	90
HS3.75SL	80	317	233	217	141	184	454	120



W1: lowest running water level

In the event of abrasive and corrosive utilization, stronger wear and tear will take place naturally in certain components. In this regard, please pay attention to our website www.tsurumi.eu/english/applications.htm.

Portable Contractors' Pumps

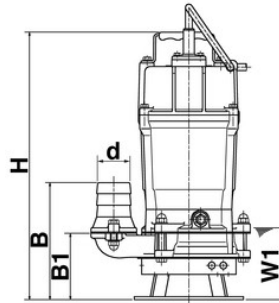
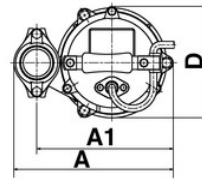
Model	Colour code curve	Bore mm	Motor output kW	Rated current A	Head max. m	Capacity max. l/min	Dry weight kg w/o cable	Max. solid handling ø mm	Pressure resistance max. m	Cable length m	Dimensions in mm:							
											d	A	A1	B	B1	D	H	W1
HSD2.55S	●	1	50	0,55	3,4	13,2	220	14,0	10	10	50	241	200	171	97	186	421	105

HSD 1-phase 50Hz

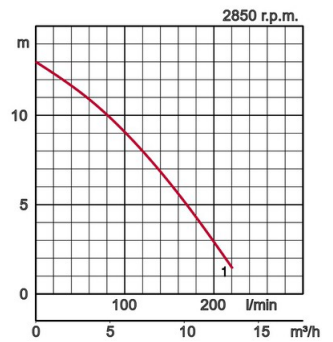


Portable Agitator Pump
for sludge and bentonite

Pumping Fluid	Type of Fluid	Sand carrying water, Sludge, Bentonite	
	Temperature	0-40°C	
Pump	Components	Impeller	Semi-Vortex impeller
		Shaft Seal	Double mechanical seal
		Bearings	Shielded ball bearings
	Material	Impeller	Chromium iron casting
		Casing	Ductile iron casting EN-GJS-700-2
Shaft Seal	Silicon carbide in oil bath		
Motor	Insulation	Insulation class E	
	Phase / Voltage	Single phase 230V / 110V / 50Hz	
	Motor Protector (built-in)	Miniature protector	
	Lubrication	Turbine oil (ISO VG32)	
	Type, Poles	Induction motor, 2 poles, IP68	
	Material	Casing	Aluminium die casting
Shaft		Stainless steel EN-X6Cr13	
Cable		Rubber, 10m H07RN8-F	
Discharge Connection	Threaded flange/Hose coupling		



W1: lowest running water level



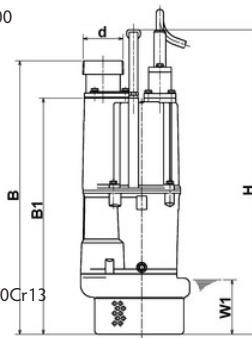
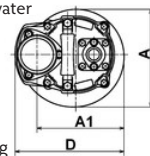
Model	Colour code curve	Bore mm	Motor output kW	Rated current A	Head max. m	Capacity max. l/min	Dry weight kg w/o cable	Max. solid handling ø mm	Pressure resistance max. m	Cable length m	Dimensions in mm:								
											d	A	A1	B	B1	D	H	W1	
NK4-22	●	1	50	2,2	14,8	24,0	525	29,0	6	25	20	50	240	194	546	464	243	614	80
NK3-22L	●	2	80	2,2	14,5	18,0	800	40,0	6	25	20	80	235	191	601	519	216	669	120

NK 1-phase 50Hz

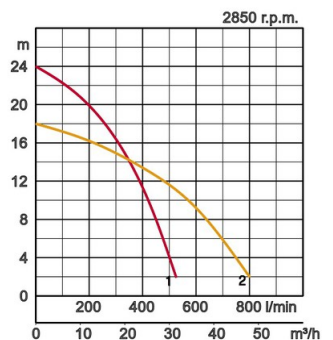


compact - single phase - 2,2kW

Pumping Fluid	Temperature	0-40°C	
	Type of Fluid	Spring water, Rain water, Ground water, Sand carrying water	
Pump	Components	Impeller	Semi-Vortex impeller
		Shaft Seal	Double mechanical seal
		Bearings	Shielded ball bearings
	Material	Impeller	Ductile iron casting EN-GJS-700-2, Chromium iron casting
		Casing	BR+natural rubber, Grey iron casting EN-GJL-200
Shaft Seal	Silicon carbide in oil bath		
Motor	Type, Poles	Induction motor, 2 poles, IP68	
	Lubrication	Turbine oil (ISO VG32)	
	Motor Protector (built-in)	Circle thermal cut-out	
	Phase / Voltage	Single phase 230V / 50Hz	
	Insulation	Insulation class F, Insulation class B	
	Material	Casing	Aluminium die casting
Shaft		Stainless steel EN-X6Cr13, Stainless steel EN-X30Cr13	
Cable		Rubber, 10m H07RN8-F	
Discharge Connection	Threaded flange/Hose coupling		



W1: lowest running water level



In the event of abrasive and corrosive utilization, stronger wear and tear will take place naturally in certain components. In this regard, please pay attention to our website www.tsurumi.eu/english/applications.htm.



Contributing to World-wide Prosperity and Understanding through Worker- and Environment-friendly Production.

Designed for increased productivity through fully integrated streamlined production systems, Tsurumi's factory in Kyoto (Japan) features a production capacity of a full 1 million pumps per year. Large-scale modern R&D facilities offer optimum conditions for experimenting and testing of even super-large pumps and for developing new products to expand the possibilities and applications of pumps. To provide optimum conditions for our main asset, our workers, as well as for the environment, special emphasis is placed on optimized working conditions with airconditioning, minimized dust and exhaust gas emission, comprehensive recycling and waste recovery.

Tsurumi (Europe) GmbH

Wahlerstr. 10
D-40472 Düsseldorf
Tel.: +49 (0)211-4179373
Fax: +49 (0)211-417937-480
Email: sales@tsurumi.eu
www.tsurumi.eu

We reserve the right to change specifications and designs herein for improvement without prior notice. Our pumps are for professional use only. In the event that Tsurumi (Europe) GmbH have, in exceptional cases taken over, a manufacturer's warranty, this entitles the enduser to assert remedy free of charge against Tsurumi (Europe) GmbH due to any defect to the product occurring during the guarantee period (see below), also then when the warranty claims against the seller do not or no longer exist. In the event of malfunction, which is attributable to the improper handling by the enduser, no guarantee claim shall arise. Further claims shall not result from the warranty, unless if something to the contrary has explicitly been determined. The decision as to whether remedy is effected by way of replacement or repair shall be at the choice of Tsurumi (Europe) GmbH. The claims shall be time barred after a period of three months after expiry of the guarantee period, however, not before expiry of the warranty period which is valid towards the seller. In the event of doubt, the warranty period shall correspond with the warranty period which is valid between the end-user and his seller.



con-1ph-EN

